

NOTES FOR STRUCTURAL TIMBER

1. ALL STRUCTURAL TIMBER FOR TRUSSES AND RAFTERS TO BE CYPRESS GRADE II GENERAL STRUCTURAL TIMBER (GS) OR BETTER IN ACCORDANCE WITH KENYAN STANDARD KS02-771:1991.
2. ALL TIMBER SHALL BE TREATED WITH AN APPROVED PRESERVATIVE AGAINST PEST AND SHALL HAVE NO VISUAL WARPING OR BENDING AFTER SEASONING.
3. LENGTHS OF TIMBER JOINED TOGETHER BY MEANS OF TIMBER SPLICES TO FORM RAFTER OR CEILING TIE SHALL HAVE LENGTHS NOT LESS THAN 3 METERS. NUMBER OF SPLICE JOINTS IN ANY ONE RAFTER OR BOOM TO BE LIMITED TO ONE.
4. RAFTERS AND TIMBER BEAMS SUPPORTED IN MASONRY TO BE STOPPED 50MM AWAY FROM INNER WALL SURFACE TO ALLOW FOR FINISHES.
5. WALL PLATE TO BE FIXED TO CONCRETE BEAM WITH 12MM DIA BOLTS AT 1200 C/C
6. ALL TIMBER RAFTERS AND TRUSSES SHALL BE FIXED TO WALL PLATE USING NAILS AND 3MM THICK BEND PLATE
7. BOLTS FOR CONNECTION OF TIMBER MEMBERS SHALL BE 16MM DIA BLACK BOLTS WITH WASHERS UNLESS NOTED OTHERWISE
8. SAMPLE TRUSS MUST BE INSPECTED AND APPROVED BY THE STRUCTURAL ENGINEER BEFORE COMMENCING FABRICATION
9. IN EVERY JOINT PROVIDE AT LEAST 2 NAILS, ONE FROM EITHER SIDE.

FOR TENDER

REV	REVISIONS	SIGN	DATE	APPROVED
T3	BY	CHECKED		
T2	BY	CHECKED		
T1	BY	CHECKED		
T0	FOR TENDER	BY		
		CHECKED		

Client

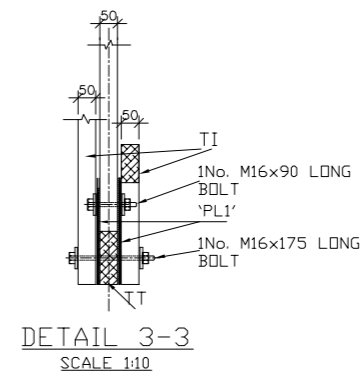
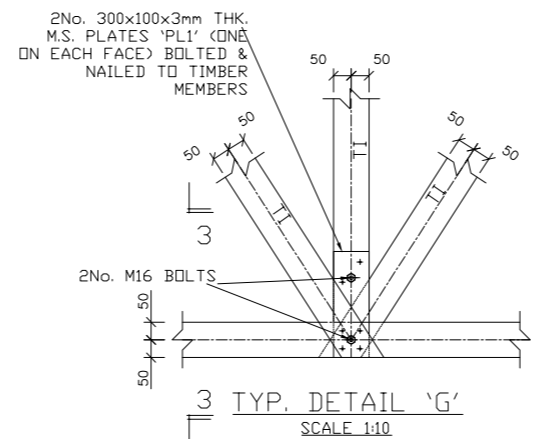
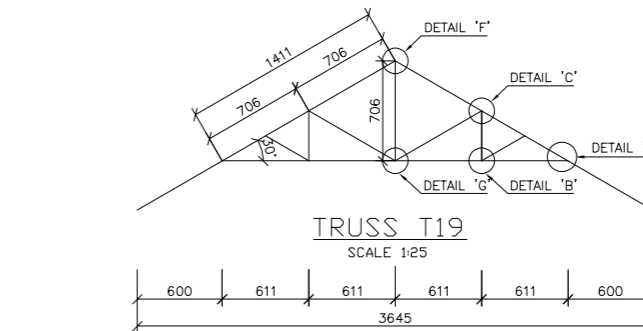
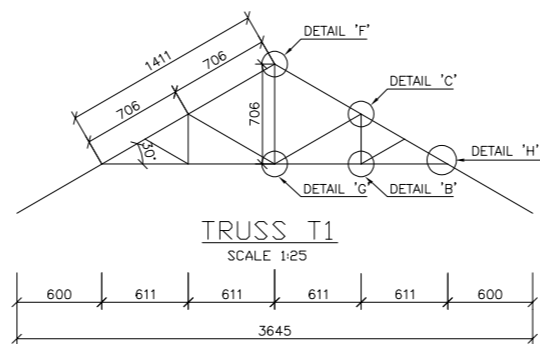
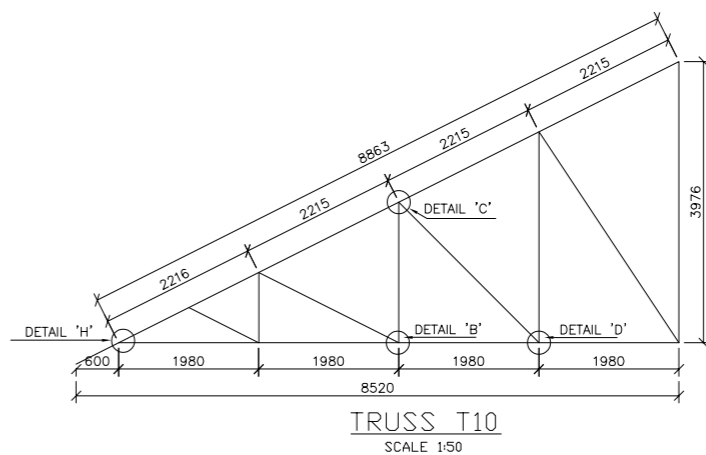
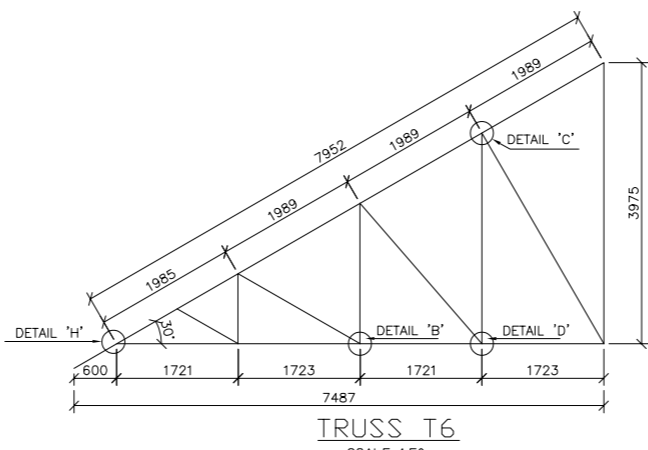
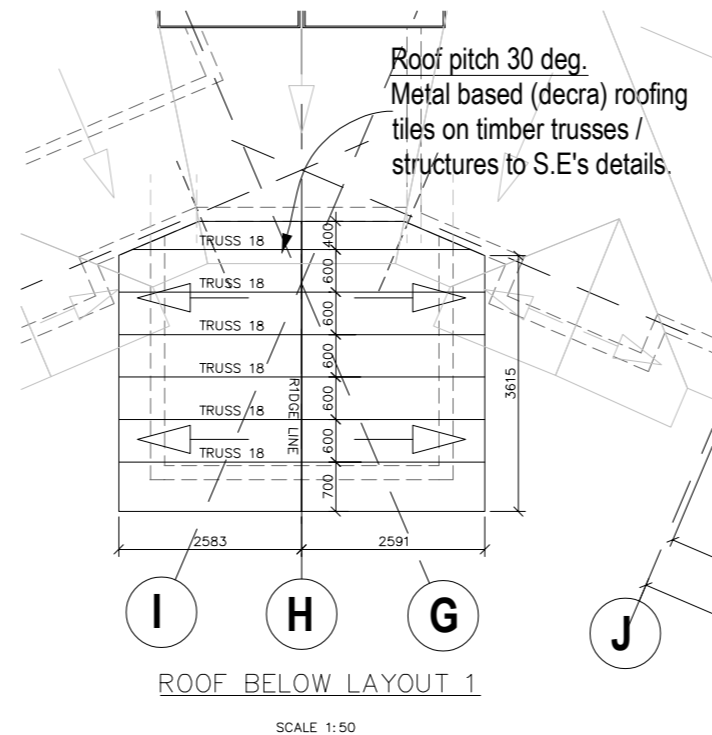
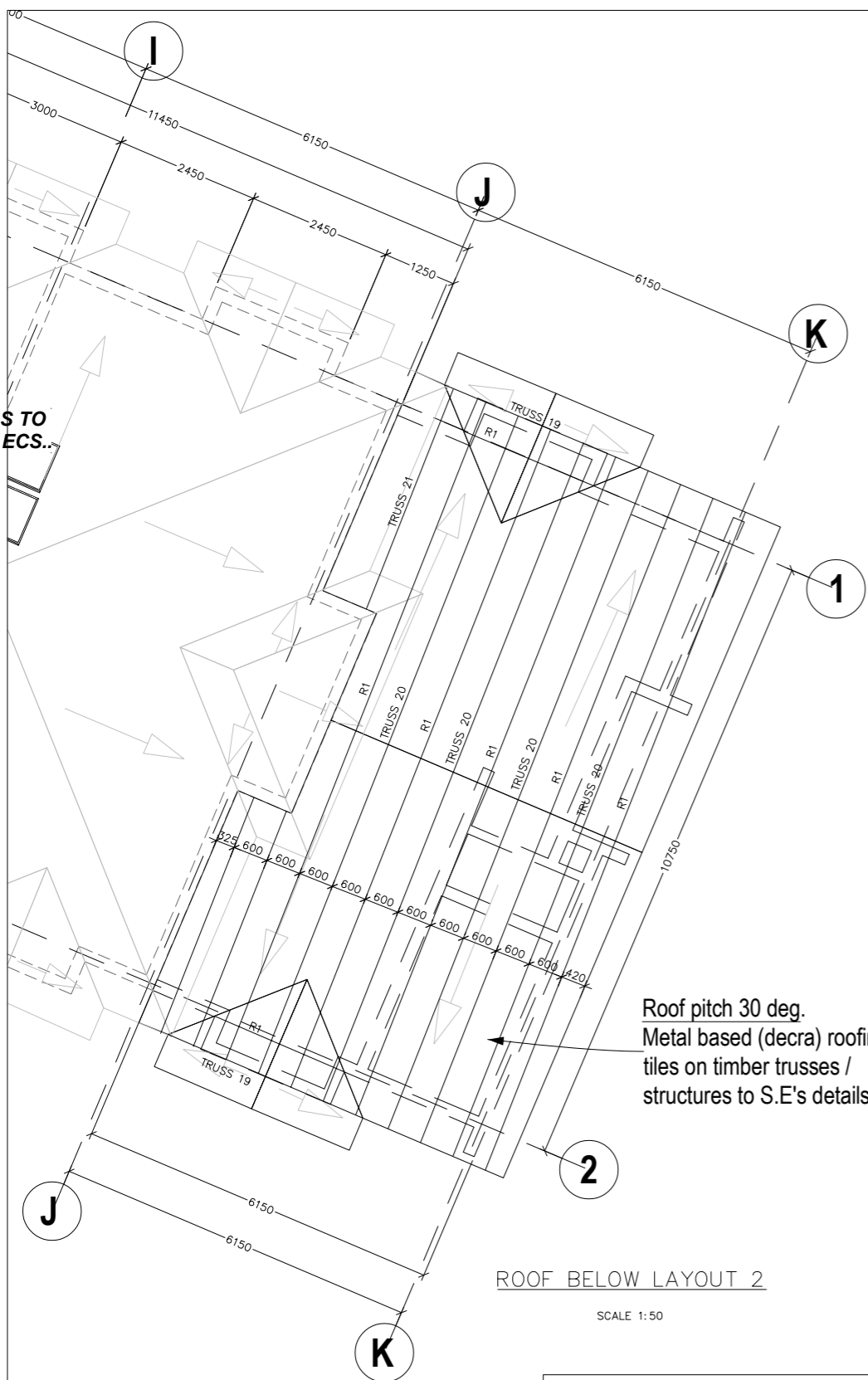
Project
PROPOSED REHABILITATION OF THE RESOURCE CENTER-KAREN ROSES JOINT BODY

Architect

Civil/Structural & Building Services Engineers.

Drawing Title

Designed by	Drawn by	
Checked by	Approved by	
Scale	Date	
Job No.	ACAD File:	
T0 STATUS	DRG No. 0003	T REV



NOTES FOR BOLT CONNECTIONS

1. BOLT HOLES MUST NOT BE MORE THAN 2mm LARGER THAN THE BOLT DIAMETER.
2. WASHERS OF DIAMETERS OF MIN. 3 x BOLT DIA. AND THICKNESS OF MIN. 1/4 x BOLT SIZE TO BE FITTED UNDER EACH NUT.
3. ALL BOLTED CONNECTIONS TO USE GRADE 4.6 BOLTS UNLESS NOTED OTHERWISE.
4. ALL BOLTS CONNECTING TIMBER SPLICES TO TRUSSES TO HAVE 1 NUT & 2 WASHERS
5. IN EVERY JOINT PROVIDE AT LEAST 2 NAILS, ONE FROM EITHER SIDE.
6. ALL BOLTED CONNECTIONS SHOULD BE GALVANISED

NOTES FOR JOINT CONNECTIONS

1. BOLT HOLES MUST NOT BE MORE THAN 2mm LARGER THAN THE BOLT DIAMETER.
2. WASHERS OF DIAMETERS OF MIN. 2 x BOLT DIA. AND THICKNESS OF MIN. 1/4 x BOLT SIZE TO BE FITTED UNDER EACH NUT.
3. ALL BOLTED CONNECTIONS TO USE GRADE 4.6 BOLTS UNLESS NOTED OTHERWISE.
4. TIMBER PACKING OF SUFFICIENT SIZE TO BE USED WHERE NECESSARY TO FACILITATE BOLTING.
5. ALL BOLTS CONNECTING TIMBER SPLICES TO TRUSSES TO HAVE 1 NUT & 2 WASHERS.
6. IN EVERY JOINT PROVIDE AT LEAST 2 NAILS, ONE FROM EITHER SIDE.

MEMBER MARKED	MEMBER DESCRIPTION	SIZE
TR	TRUSS RAFTER	100x50mm
T2	TRUSS TIE (BOTTOM MEMBER)	150x50mm/100x50mm
T1	TRUSS INTERNAL	100x50mm
R1	COMMON RAFTER	100x50mm
P1	TIMBER PURLIN	100x50mm
	ROOF PITCH	30.0°

TRUSS NO	BOTTOM MEMBERS	INTERNALS	TOP MEMBERS
TRUSS 1-14,16,18-20	100x50mm	100x50mm	100x50mm
TRUSS 15&17	150x50mm	100x50mm	100x50mm

NOTE FOR TRUSS 15&17 THE BOTTOM MEMBERS ARE DOUBLE MEMBERS AS SHOWN IN SEC 2-2

- #### NOTES FOR STRUCTURAL TIMBER
1. ALL STRUCTURAL TIMBER FOR TRUSSES AND RAFTERS TO BE CYPRESS GRADE II GENERAL STRUCTURAL TIMBER (GS) OR BETTER IN ACCORDANCE WITH KENYAN STANDARD K502-771:1991.
 2. ALL TIMBER SHALL BE TREATED WITH AN APPROVED PRESERVATIVE AGAINST PEST AND SHALL HAVE NO VISUAL WARPING OR BENDING AFTER SEASONING.
 3. LENGTHS OF TIMBER JOINED TOGETHER BY MEANS OF TIMBER SPLICES TO FORM RAFTER OR CEILING TIE SHALL HAVE LENGTHS NOT LESS THAN 3 METERS. NUMBER OF SPLICE JOINTS IN ANY ONE RAFTER OR BOOM TO BE LIMITED TO ONE.
 4. RAFTERS AND TIMBER BEAMS SUPPORTED IN MASONRY TO BE STOPPED 50MM AWAY FROM INNER WALL SURFACE TO ALLOW FOR FINISHES.
 5. WALL PLATE TO BE FIXED TO CONCRETE BEAM WITH 12MM DIA BOLTS AT 1200 C/C
 6. ALL TIMBER RAFTERS AND TRUSSES SHALL BE FIXED TO WALL PLATE USING NAILS AND 3MM THICK BEND PLATE
 7. BOLTS FOR CONNECTION OF TIMBER MEMBERS SHALL BE 16MM DIA BLACK BOLTS WITH WASHERS UNLESS NOTED OTHERWISE
 8. SAMPLE TRUSS MUST BE INSPECTED AND APPROVED BY THE STRUCTURAL ENGINEER BEFORE COMMENCING FABRICATION
 9. IN EVERY JOINT PROVIDE AT LEAST 2 NAILS, ONE FROM EITHER SIDE.

FOR TENDER

REV	REVISIONS	SIGN	DATE	APPROVED
T3	BY CHECKED			
T2	BY CHECKED			
T1	BY CHECKED			
T0	FOR TENDER BY CHECKED			

Client

Project
PROPOSED REHABILITATION OF THE RESOURCE CENTER-KAREN ROSES JOINT BODY

Architect
Civil/Structural & Building Services Engineers.

Drawing Title

Designed by _____ Drawn by _____

Checked by _____ Approved by _____

Scale _____ Date _____

Job No. _____ ACAD File: _____

T
STATUS DRG No. 0004 T
REV

NOTES FOR STRUCTURAL TIMBER

1. ALL STRUCTURAL TIMBER FOR TRUSSES AND RAFTERS TO BE CYPRESS GRADE II GENERAL STRUCTURAL TIMBER (GS) OR BETTER IN ACCORDANCE WITH KENYAN STANDARD KS02-771:1991.
2. ALL TIMBER SHALL BE TREATED WITH AN APPROVED PRESERVATIVE AGAINST PEST AND SHALL HAVE NO VISUAL WARPING OR BENDING AFTER SEASONING.
3. LENGTHS OF TIMBER JOINED TOGETHER BY MEANS OF TIMBER SPLICES TO FORM RAFTER OR CEILING TIE SHALL HAVE LENGTHS NOT LESS THAN 3 METERS. NUMBER OF SPLICE JOINTS IN ANY ONE RAFTER OR BOOM TO BE LIMITED TO ONE.
4. RAFTERS AND TIMBER BEAMS SUPPORTED IN MASONRY TO BE STOPPED 50MM AWAY FROM INNER WALL SURFACE TO ALLOW FOR FINISHES.
5. WALL PLATE TO BE FIXED TO CONCRETE BEAM WITH 12MM DIA BOLTS AT 1200 C/C
6. ALL TIMBER RAFTERS AND TRUSSES SHALL BE FIXED TO WALL PLATE USING NAILS AND 3MM THICK BEND PLATE
7. BOLTS FOR CONNECTION OF TIMBER MEMBERS SHALL BE 16MM DIA BLACK BOLTS WITH WASHERS UNLESS NOTED OTHERWISE
8. SAMPLE TRUSS MUST BE INSPECTED AND APPROVED BY THE STRUCTURAL ENGINEER BEFORE COMMENCING FABRICATION
9. IN EVERY JOINT PROVIDE AT LEAST 2 NAILS, ONE FROM EITHER SIDE.

NOTES FOR BOLT CONNECTIONS

1. BOLT HOLES MUST NOT BE MORE THAN 2mm LARGER THAN THE BOLT DIAMETER.
2. WASHERS OF DIAMETERS OF MIN. 3 x BOLT DIA. AND THICKNESS OF MIN. 1/4 x BOLT SIZE TO BE FITTED UNDER EACH NUT.
3. ALL BOLTED CONNECTIONS TO USE GRADE 4.6 BOLTS UNLESS NOTED OTHERWISE.
4. ALL BOLTS CONNECTING TIMBER SPLICES TO TRUSSES TO HAVE 1 NUT & 2 WASHERS
5. IN EVERY JOINT PROVIDE AT LEAST 2 NAILS, ONE FROM EITHER SIDE.
6. ALL BOLTED CONNECTIONS SHOULD BE GALVANISED

NOTES FOR JOINT CONNECTIONS

1. BOLT HOLES MUST NOT BE MORE THAN 2mm LARGER THAN THE BOLT DIAMETER.
2. WASHERS OF DIAMETERS OF MIN. 2 x BOLT DIA. AND THICKNESS OF MIN. 1/4 x BOLT SIZE TO BE FITTED UNDER EACH NUT.
3. ALL BOLTED CONNECTIONS TO USE GRADE 4.6 BOLTS UNLESS NOTED OTHERWISE.
4. TIMBER PACKING OF SUFFICIENT SIZE TO BE USED WHERE NECESSARY TO FACILITATE BOLTING.
5. ALL BOLTS CONNECTING TIMBER SPLICES TO TRUSSES TO HAVE 1 NUT & 2 WASHERS.
6. IN EVERY JOINT PROVIDE AT LEAST 2 NAILS, ONE FROM EITHER SIDE.

LEGEND		
MEMBER MARKED	MEMBER DESCRIPTION	SIZE
TR	TRUSS RAFTER	100x50mm
T2	TRUSS TIE (BOTTOM MEMBER)	150x50mm/100x50mm
T1	TRUSS INTERNAL	100x50mm
R1	COMMON RAFTER	100x50mm
P1	TIMBER PURLIN	100x50mm
	ROOF PITCH	30.0°

FOR TENDER

REV	REVISIONS	SIGN	DATE	APPROVED
T3	BY	CHECKED		
T2	BY	CHECKED		
T1	BY	CHECKED		
T0	FOR TENDER	BY	CHECKED	

Client

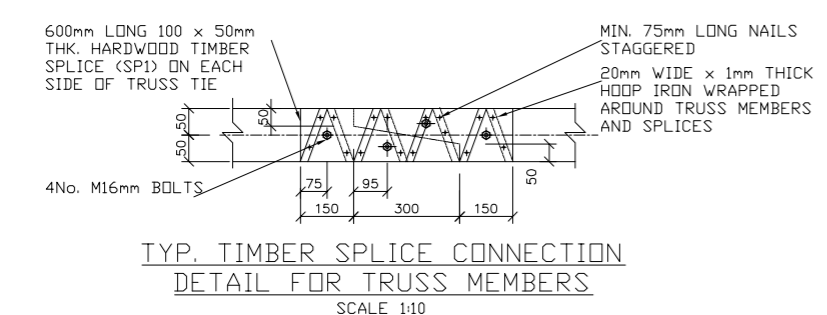
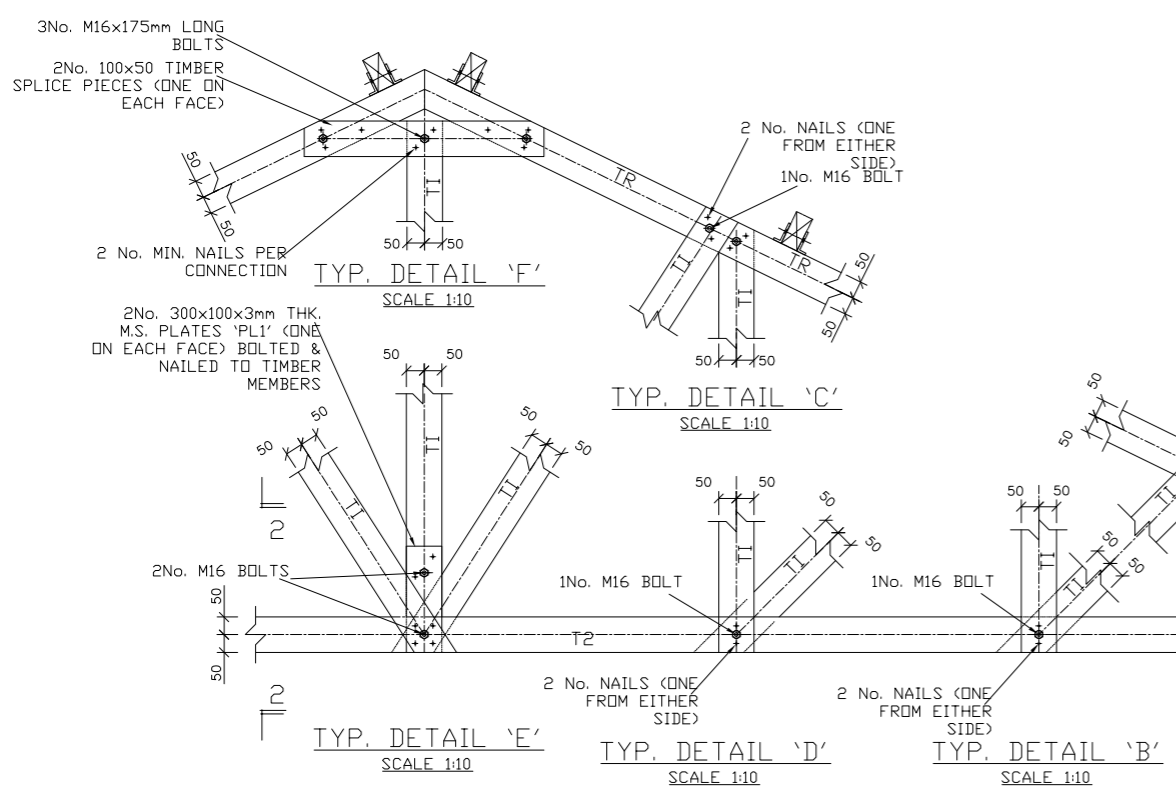
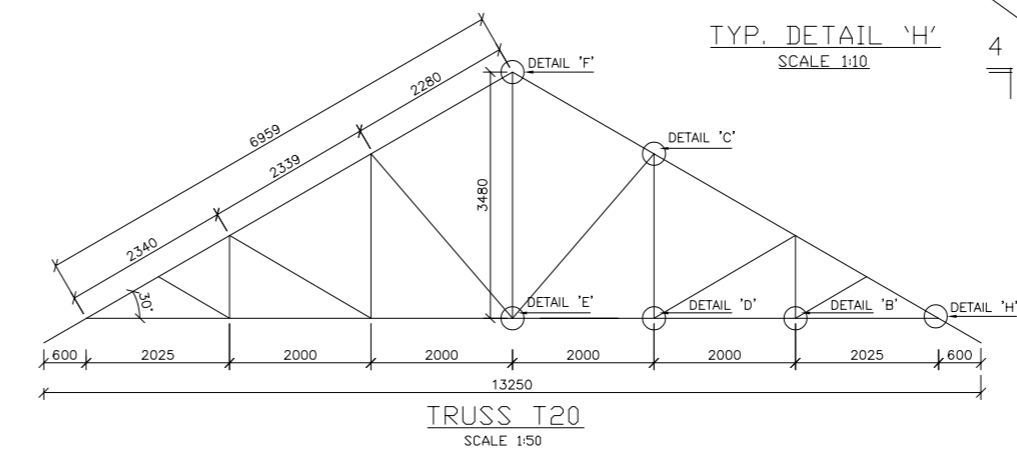
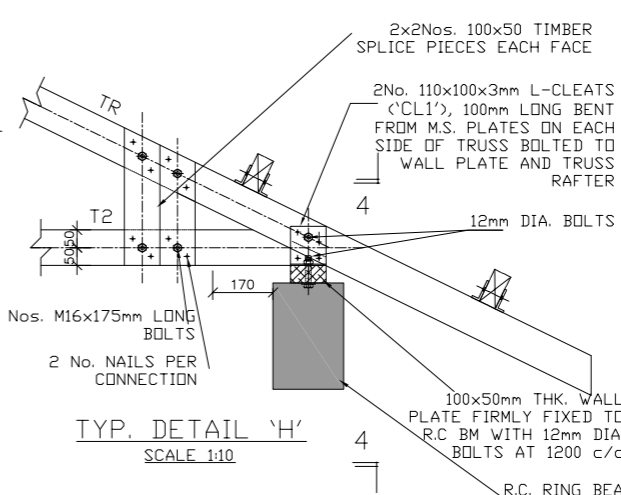
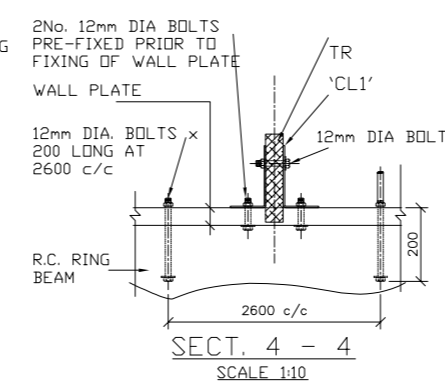
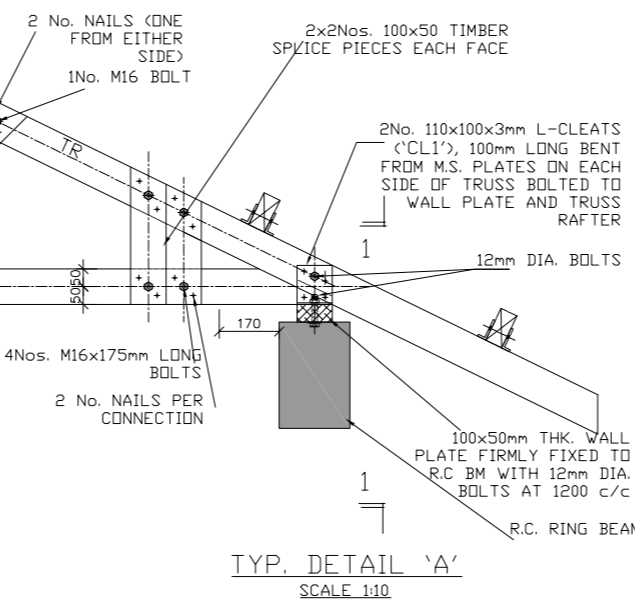
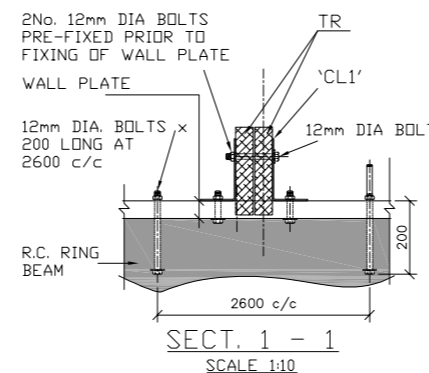
Project
PROPOSED REHABILITATION OF THE RESOURCE CENTER-KAREN ROSES JOINT BODY

Architect

Civil/Structural & Building Services Engineers.

Drawing Title

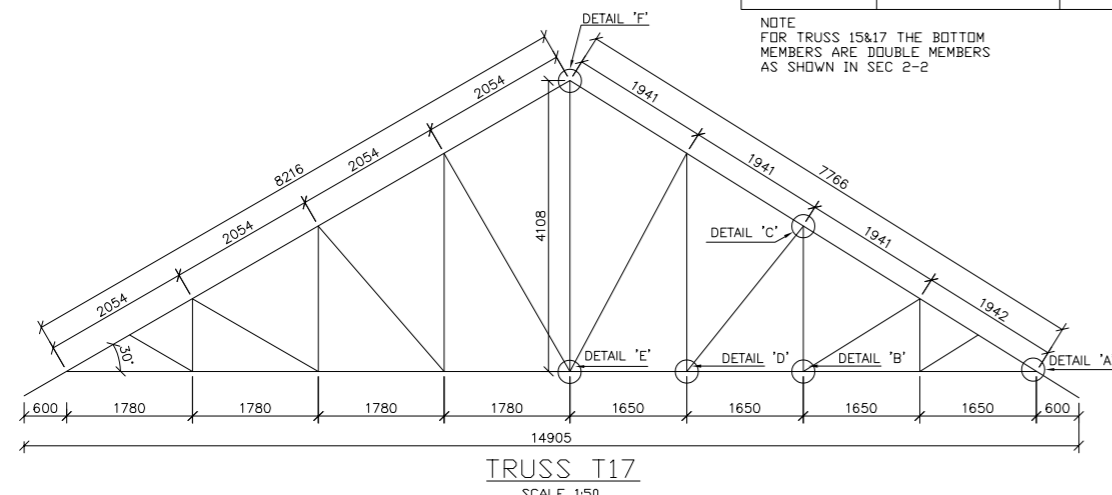
Designed by	Drawn by
Checked by	Approved by
Scale	Date
Job No.	ACAD File:
T0	DRG No. 0005
STATUS	T REV

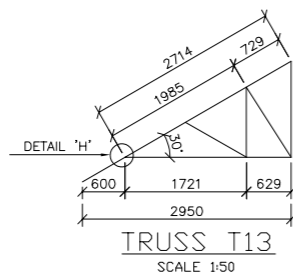
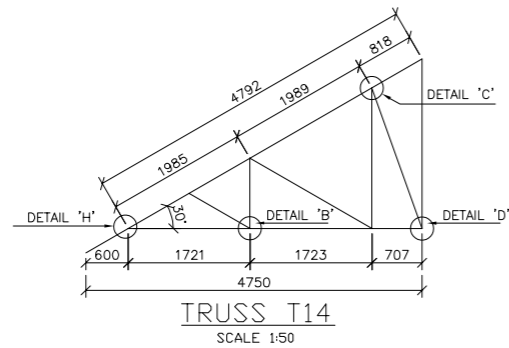
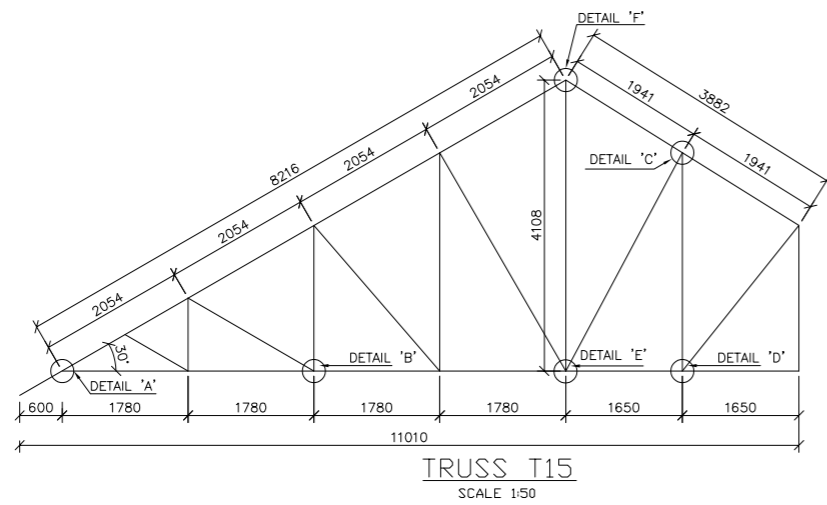


PLAN ON TIMBER SPLICE DETAIL SCALE 1:10

TRUSS NO.	BOTTOM MEMBERS	INTERNALS	TOP MEMBERS
TRUSS 1-14,16,18-20	100x50mm	100x50mm	100x50mm
TRUSS 15&17	150x50mm	100x50mm	100x50mm

NOTE FOR TRUSS 15&17 THE BOTTOM MEMBERS ARE DOUBLE MEMBERS AS SHOWN IN SEC 2-2





NOTES FOR BOLT CONNECTIONS

1. BOLT HOLES MUST NOT BE MORE THAN 2mm LARGER THAN THE BOLT DIAMETER.
2. WASHERS OF DIAMETERS OF MIN. 3 x BOLT DIA. AND THICKNESS OF MIN. 1/4 x BOLT SIZE TO BE FITTED UNDER EACH NUT.
3. ALL BOLTED CONNECTIONS TO USE GRADE 4.6 BOLTS UNLESS NOTED OTHERWISE.
4. ALL BOLTS CONNECTING TIMBER SPLICES TO TRUSSES TO HAVE 1 NUT & 2 WASHERS
5. IN EVERY JOINT PROVIDE AT LEAST 2 NAILS, ONE FROM EITHER SIDE.
6. ALL BOLTED CONNECTIONS SHOULD BE GALVANISED

NOTES FOR JOINT CONNECTIONS

1. BOLT HOLES MUST NOT BE MORE THAN 2mm LARGER THAN THE BOLT DIAMETER.
2. WASHERS OF DIAMETERS OF MIN. 2 x BOLT DIA. AND THICKNESS OF MIN. 1/4 x BOLT SIZE TO BE FITTED UNDER EACH NUT.
3. ALL BOLTED CONNECTIONS TO USE GRADE 4.6 BOLTS UNLESS NOTED OTHERWISE.
4. TIMBER PACKING OF SUFFICIENT SIZE TO BE USED WHERE NECESSARY TO FACILITATE BOLTING.
5. ALL BOLTS CONNECTING TIMBER SPLICES TO TRUSSES TO HAVE 1 NUT & 2 WASHERS.
6. IN EVERY JOINT PROVIDE AT LEAST 2 NAILS, ONE FROM EITHER SIDE.

LEGEND

MEMBER MARKED	MEMBER DESCRIPTION	SIZE
TR	TRUSS RAFTER	100x50mm
T2	TRUSS TIE (BOTTOM MEMBER)	150x50mm/100x50mm
TI	TRUSS INTERNAL	100x50mm
R1	COMMON RAFTER	100x50mm
P1	TIMBER PURLIN	100x50mm
	ROOF PITCH	30.0°

TRUSS NO	BOTTOM MEMBERS	INTERNALS	TOP MEMBERS
TRUSS 1-14,16,18-20	100x50mm	100x50mm	100x50mm
TRUSS 15&17	150x50mm	100x50mm	100x50mm

NOTE FOR TRUSS 15&17 THE BOTTOM MEMBERS ARE DOUBLE MEMBERS AS SHOWN IN SEC 2-2

NOTES FOR STRUCTURAL TIMBER

1. ALL STRUCTURAL TIMBER FOR TRUSSES AND RAFTERS TO BE CYPRESS GRADE II GENERAL STRUCTURAL TIMBER (GS) OR BETTER IN ACCORDANCE WITH KENYAN STANDARD KS02-771:1991.
2. ALL TIMBER SHALL BE TREATED WITH AN APPROVED PRESERVATIVE AGAINST PEST AND SHALL HAVE NO VISUAL WARPING OR BENDING AFTER SEASONING.
3. LENGTHS OF TIMBER JOINED TOGETHER BY MEANS OF TIMBER SPLICES TO FORM RAFTER OR CEILING TIE SHALL HAVE LENGTHS NOT LESS THAN 3 METERS. NUMBER OF SPLICE JOINTS IN ANY ONE RAFTER OR BOOM TO BE LIMITED TO ONE.
4. RAFTERS AND TIMBER BEAMS SUPPORTED IN MASONRY TO BE STOPPED 50MM AWAY FROM INNER WALL SURFACE TO ALLOW FOR FINISHES.
5. WALL PLATE TO BE FIXED TO CONCRETE BEAM WITH 12MM DIA BOLTS AT 1200 C/C
6. ALL TIMBER RAFTERS AND TRUSSES SHALL BE FIXED TO WALL PLATE USING NAILS AND 3MM THICK BEND PLATE
7. BOLTS FOR CONNECTION OF TIMBER MEMBERS SHALL BE 16MM DIA BLACK BOLTS WITH WASHERS UNLESS NOTED OTHERWISE
8. SAMPLE TRUSS MUST BE INSPECTED AND APPROVED BY THE STRUCTURAL ENGINEER BEFORE COMMENCING FABRICATION
9. IN EVERY JOINT PROVIDE AT LEAST 2 NAILS, ONE FROM EITHER SIDE.

FOR TENDER

REV	REVISIONS	SIGN	DATE	APPROVED
T3	BY			
	CHECKED			
T2	BY			
	CHECKED			
T1	BY			
	CHECKED			
T0	FOR TENDER BY			
	CHECKED			

Client

Project
PROPOSED REHABILITATION OF THE RESOURCE CENTER-KAREN ROSES JOINT BODY

Architect

Civil/Structural & Building Services Engineers.

Drawing Title

Designed by	Drawn by
Checked by	Approved by
Scale	Date
Job No.	ACAD File:
T0 STATUS	DRG No. 0006
	T REV